

## Appendix 1

### Wales Public Accountability Measures Analysis 2016/17

#### NSI and PAM Wales Analysis

Each year the council submits data to the Data Unit Wales, which has produced an analysis tool to enable Welsh authorities to compare their performance across 25 measures in 2016/17. The data for each Local Authority is published in the media and on the Data Unit's website.

Newport has continued to improve performance in national measures despite a backdrop of budget cuts and limited resources. The improvements reflect significant efforts made in service areas within the Council. It is important to note that these comparator figures do not take into consideration the potential impacts of financial position, population demographics or service demands.

#### Newport's Performance 2016/17

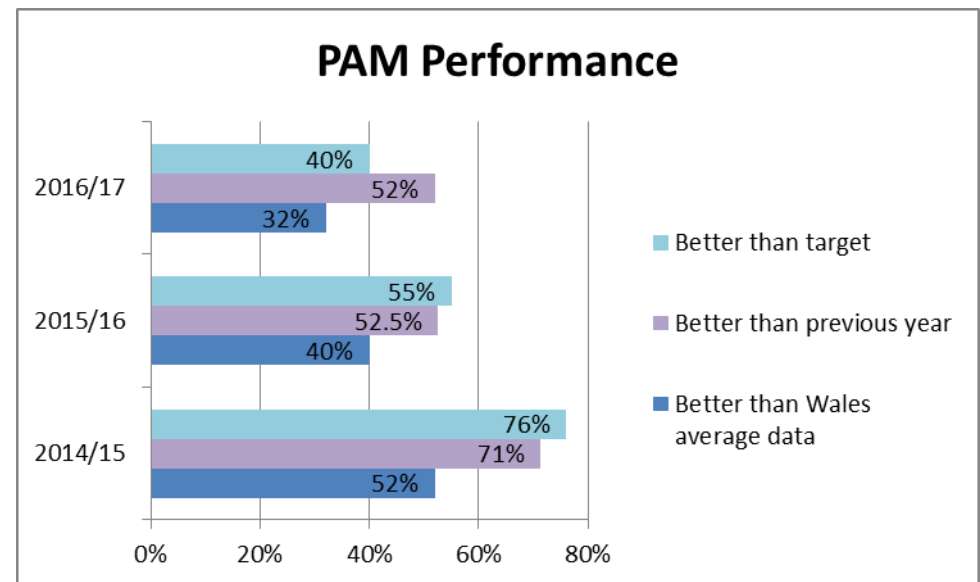
##### Overall Summary of Performance

In 2016/17 the council has continued to improve in 52% (13 out of 25) of national measures and 8% (2) measures remained the same.

These figures combined show that 60% of national measures have either improved or remained the same.

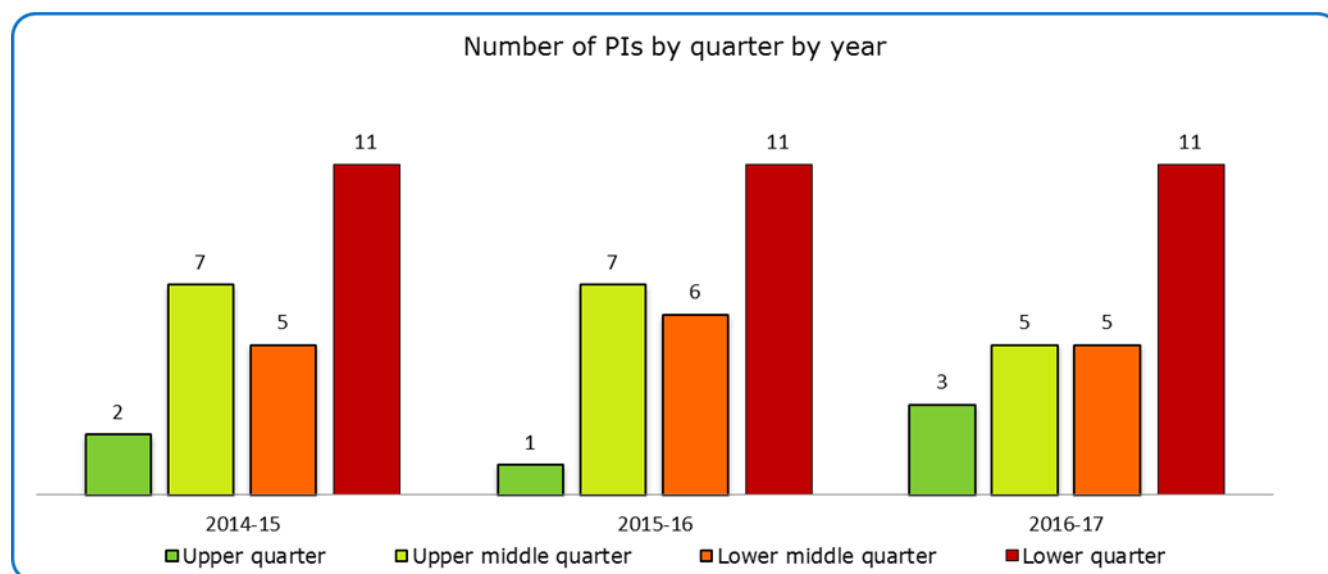
Regular monitoring of performance throughout the year by Heads of Service and Cabinet Members has delivered improved services.

PAM Performance	2014/15	2015/16	2016/17
Better than Wales average data	52%	40%	32%
Better than previous year	71%	52.5%	52%
Better than target	76%	55%	40%



## Quartile Performance 2016/17

There are a high proportion of measures in quartile 4; these measures are shown in the table below.



## Measures in Quartile 4

Performance Indicator	PI value	Year on year performance - 2015-16 vs. 2016-17 (based on PI value)	Year on year performance - 2015-16 vs. 2016-17 (based on quarter position)	Rank
EDU/004: The percentage of pupils assessed at the end of Key Stage 3, in schools maintained by the local authority, achieving the Core Subject Indicator, as determined by Teacher Assessment	83.4	↑	→	19
EDU/015b: The percentage of final statements of special education need issued within 26 weeks, excluding exceptions	84.4	↑	→	21
EDU/016b: Percentage of pupil attendance in secondary schools	93.3	↑	→	21
LCL/001(b): The number of visits to Public Libraries during the year, per 1,000 population	3,292	↑	→	22
WMT/009(b): The percentage of municipal waste collected by local authorities and prepared for reuse and/or recycled, including source segregated biowastes that are composted or treated biologically in another way	61.39	↑	→	18
EDU/006ii: The percentage of pupils assessed, in schools maintained by the local authority, receiving a Teacher Assessment in Welsh (first language) at the end of Key Stage 3	0.0	→	→	19
EDU/016a: Percentage of pupil attendance in primary schools	94.5	→	→	21

Performance Indicator	PI value	Year on year performance - 2015-16 vs. 2016-17 (based on PI value)	Year on year performance - 2015-16 vs. 2016-17 (based on quarter position)	Rank
EDU/002i: The percentage of all pupils (including those in LA care) in any LA maintained school, aged 15 as at the preceding 31 August that leave compulsory education, training or work based learning without an approved external qualification	0.3	↓	→	19
EDU/011: The average point score for pupils aged 15 at the preceding 31 August, in schools maintained by the local authority	477.7	↓	↓	19
PLA/006(b): The number of additional affordable housing units provided during the year as a percentage of all additional housing units provided during the year	22	↓	→	22
PSR/004: The percentage of private sector dwellings that had been vacant for more than 6 months at 1 April that were returned to occupation during the year through direct action by the local authority	3.87	↓	↓	16

#### Measures where performance has declined

Performance for 13 measures has improved which represents 52% of the PAM data set, 32% of measures have declined in performance.

Performance Indicator	Quarter	PI value	Year on year performance - 2015-16 vs. 2016-17 (based on PI value)	Year on year performance - 2015-16 vs. 2016-17 (based on quarter position)	Rank
EDU/002i: The percentage of all pupils (including those in LA care) in any LA maintained school, aged 15 as at the preceding 31 August that leave compulsory education, training or work based learning without an approved external qualification	4	0.3	↓	→	19

Performance Indicator	Quarter	PI value	Year on year performance - 2015-16 vs. 2016-17 (based on PI value)	Year on year performance - 2015-16 vs. 2016-17 (based on quarter position)	Rank
EDU/003: The percentage of pupils assessed at the end of Key Stage 2, in schools maintained by the local authority, achieving the Core Subject Indicator, as determined by Teacher Assessment	3	88.8	↓	↓	12
EDU/011: The average point score for pupils aged 15 at the preceding 31 August, in schools maintained by the local authority	4	477.7	↓	↓	19
LCS/002(b): The number of visits to local authority sport and leisure facilities during the year per 1,000 population where the visitor will be participating in physical activity	3	8,038	↓	↓	14
PLA/006(b): The number of additional affordable housing units provided during the year as a percentage of all additional housing units provided during the year	4	22	↓	→	22
PPN/009: The percentage of food establishments which are 'broadly compliant' with food hygiene standards	2	95.10	↓	→	11
PSR/004: The percentage of private sector dwellings that had been vacant for more than 6 months at 1 April that were returned to occupation during the year through direct action by the local authority	4	3.87	↓	↓	16
THS/012: The percentage of principal (A) roads, non-principal (B) roads and non-principal (C) roads that are in overall poor condition	2	5.7	↓	→	7